

043501

RECORDED
LARAMIE COUNTY
CHEYENNE, WY.

CERTIFIED LAND CORNER RECORDATION

'88 MAY 5 PM 1 30

DESCRIPTION OF CORNER EVIDENCE FOUND, AND ORIGINAL RECORD (If known)

Found 5"x12" sandstone projecting 7" above ground firmly set in E-W fence line.

1/4 S.35
S.2
T.18N., R.67W.
6th P.M.

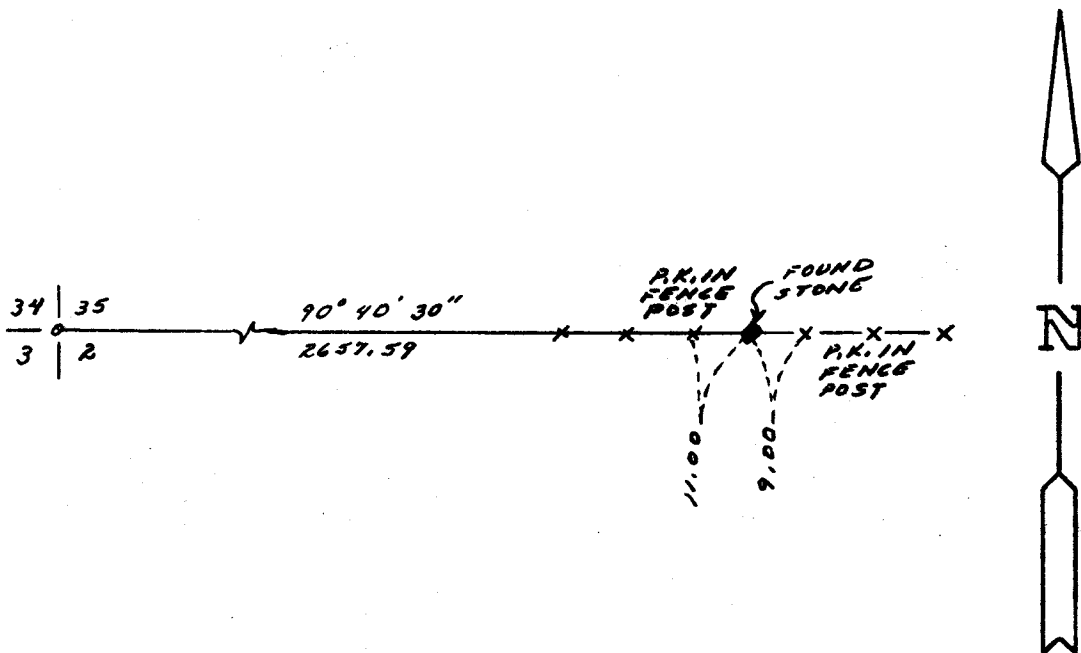
G.L.O. Record: Set sandstone 16"x12"x5".

DESCRIPTION OF MONUMENT AND ACCESSORIES ESTABLISHED
TO PERPETUATE THE ORIGINAL LOCATION OF THIS CORNER:

At the corner: Not remonumented

Accessories: See ties below.

SKETCH, WITH COURSE AND DISTANCE TO ADJACENT CORNER IF DETERMINED IN THIS SURVEY.
(May Sketch or Paste Reproduction on Reverse Side.)



I, John A. Steil certify that I have carefully performed or reviewed the work done on the diagrammed corner as reported on this recordation form and approve the same.

John A. Steil
Signature of Surveyor

L.S. 2500
Registration No.

STATE OF WYOMING,
Office of Clerk and Recorder,
County of Laramie

This "corner record" was filed for record on the 5th day of May, 1988, was noted on the cross-index plat and is assigned page No. 2017, in book No. 1259.

Janet C. Whitehead
County Official

Cross Index No.	A-19	T. 18N	R. 67W	Mer. 6th
	Z-19	T. 19N	R. 67W	Mer. 6th
		T.	R.	Mer.
		T.	R.	Mer.
		T.	R.	Mer.
		T.	R.	Mer.
		T.	R.	Mer.
		T.	R.	Mer.